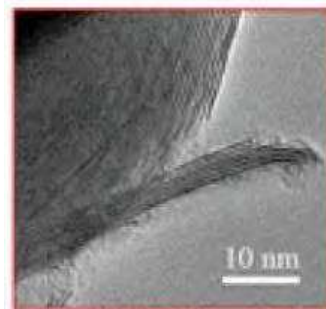


Anti-Friction & Anti-Wear Engine Oil Additive

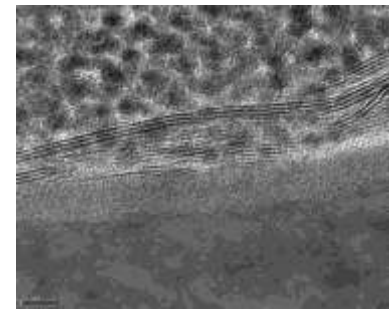
Double Acting Nano lubricants



Multi layered WS2 Fullerene



During operation
Nanoparticles slowly exfoliate
outer tribofilm layers



Exfoliated tribofilms
bind with eroded
metal surface and coat grooves

WolfSul™ RC-X is a new generation surface-reconditioning nano lubricant for engine oil.

Featuring a unique “double action” effect: Multi-layers WS₂ nano- spheres lower friction and heat, thereby reducing mechanical wear.

At the same time, friction causes nano-spheres to release tribofilms that attach to surface scratches and grooves, re-coat them, thereby extending mechanical efficiency and apparatus life.

WolfSul™ RC-X is based on formulated mineral oil concentrate mixed with proprietary super-strong Tungsten Disulphide (WS₂) multi-layered nano-fullerene particles.

EXAMPLES OF USE:

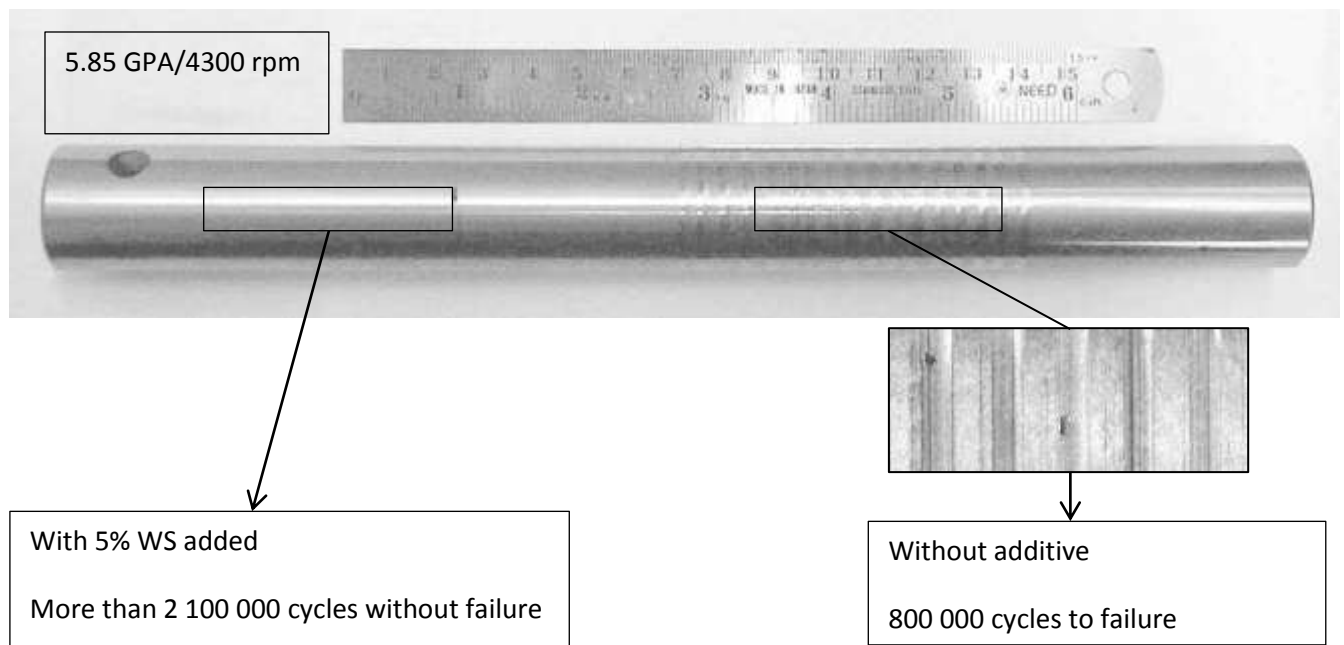
- Aerospace Components
- Plastic Moulds
- Automotive Parts
- Marine Mechanisms
- Firearms Components
- Machinery Components
- Power Transmission Components
- Gears
- Pistons and Piston Rings
- Positioning Equipment
- Vacuum Mechanisms
- Anti-Galling and Anti-Seizing
- Food Processing Equipment
- Medical Devices
- Extrusion Dies
- Racing engines
- Hydraulic/Pneumatic
- Valve Components
- Spindles
- Bearings
- Shafts
- Cams and Cam followers
- Die Casting Moulds
- Cutting Tools
- Sliding or Rotating Components
- Pharmaceutical Equipment

PRODUCT CHARACTERISTICS:

- Lubricity—lowest coefficient of friction available in a solid material!
- Friction coefficient of 0.03 Dynamic, 0.07 Static
- Excellent release properties. Non-stick.
- Non-toxic
- Prevent galling, seizing or cold-welding
- Can be used at loads of over 300,000 psi!
- Withstands high temperatures
- Extremely thin 1/2 micron coating thickness.
- Bonded to the substrate without the use of binders, unlike many powdered lubricants
- Cannot chip, peel or flake
- Ultra thin--suitable for high precision components.
- WS₂ can eliminate the need for liquid lubricants
- Can be used with oils and greases. It has an affinity for lubricants and maintains a hydrodynamic layer.

WolfSul™ enhanced gear oil prevents fatigue failure in gear shafts

Example when used with 85W140 oil



APPLICATION:

- Engine oil treatment for automotive and generator 4-stroke engines. Including private cars, trucks, industrial engines, boats & motorbikes.
- Suitable for all types of engines: gasoline & diesel, modern or classic. Suitable for all types of oils - synthetic, semi-synthetic or mineral.

- Can be used as an AF/AW additive as part of the additives package of fully-formulated ready to use engine oil or as a top up after market product.

Tungsten disulphide can also be used as a dry lubricant for mechanical parts, and is often preferred because it can be used within a wide range of temperatures and will not introduce contaminants into the machinery. Sandblasting equipment can be used to apply the lubricant. Otherwise, WS₂ can be applied with a buffing wheel. If the WS₂ can be mixed with wet lubricants in your application, it may be added to oil or other lubricants. If you are applying WS₂ to small parts, a tumbler may be used.

BASIC TECHNICAL INFORMATION:

Treat rate	2% - 7% v/v in host oil
Carrier	Mineral oil
Viscosity	95 - 130 cSt at 40oC
Density	0.90 - 1.10 g/cc
Health	Non-toxic nanoparticles as per OECD protocols
Safety	EU REACH Compliant

PACKAGING:

Available in 100ml and 500 ml plastic bottles ready for dispensing; bulk packaging 20 and 200 litre containers, 1000 litre IBC container